

WGS 84 POSITIONS can be plotted directly on this chart

RIVER HUMBER SKITTER CHANNEL

DEPTHS IN METRES
SCALE 1 : 10000

SURVEYED BY
Harbour Master, Humber
ASSOCIATED BRITISH PORTS
18th May 2017

Depths are in metres and decimetres reduced to the chart datum given below
Underlined figures are drying heights in metres and decimetres above chart datum

TIDAL LEVELS AND CHART DATUM

PLACE	Heights in metres above Chart Datum				Chart Datum and remarks
	M.H.W.S	M.H.W.N	M.L.W.N	M.L.W.S	
KING GEORGE DOCK	7.6	6.0	2.5	0.7	3.9m below O.D. Newlyn Being approx. L.A.T.
ALBERT DOCK	7.6	5.9	2.5	0.7	
HUMBER BRIDGE	7.2	5.4	1.9	0.3	3.3m - - - -

Projection: Transverse Mercator. National Grid references are given along borders of chart

1. Light stars without legends represent two fixed lights displayed vertically and are seen as red to port and green to starboard when proceeding upriver.

2. Gas pipelines contain flammable natural gas under high pressure. Any stop along the lines would face an immediate fire hazard. Mariners must not anchor in the vicinity of the lines.

Whilst every care was taken in the preparation of this Chart, which is intended to provide preparation, AIP gives notice that, thereafter, on account of the quickly shifting character of the river bed, no warranty is afforded that such data can be relied upon and, further, no responsibility can be accepted by AIP for any inaccuracy in the Chart or omission therefrom.

SATELLITE-DERIVED POSITIONS
Positions obtained from satellite navigation systems, such as the Global Positioning System (GPS), are normally referred to the World Geodetic System 1984 Datum. Such positions can be plotted directly on this chart.

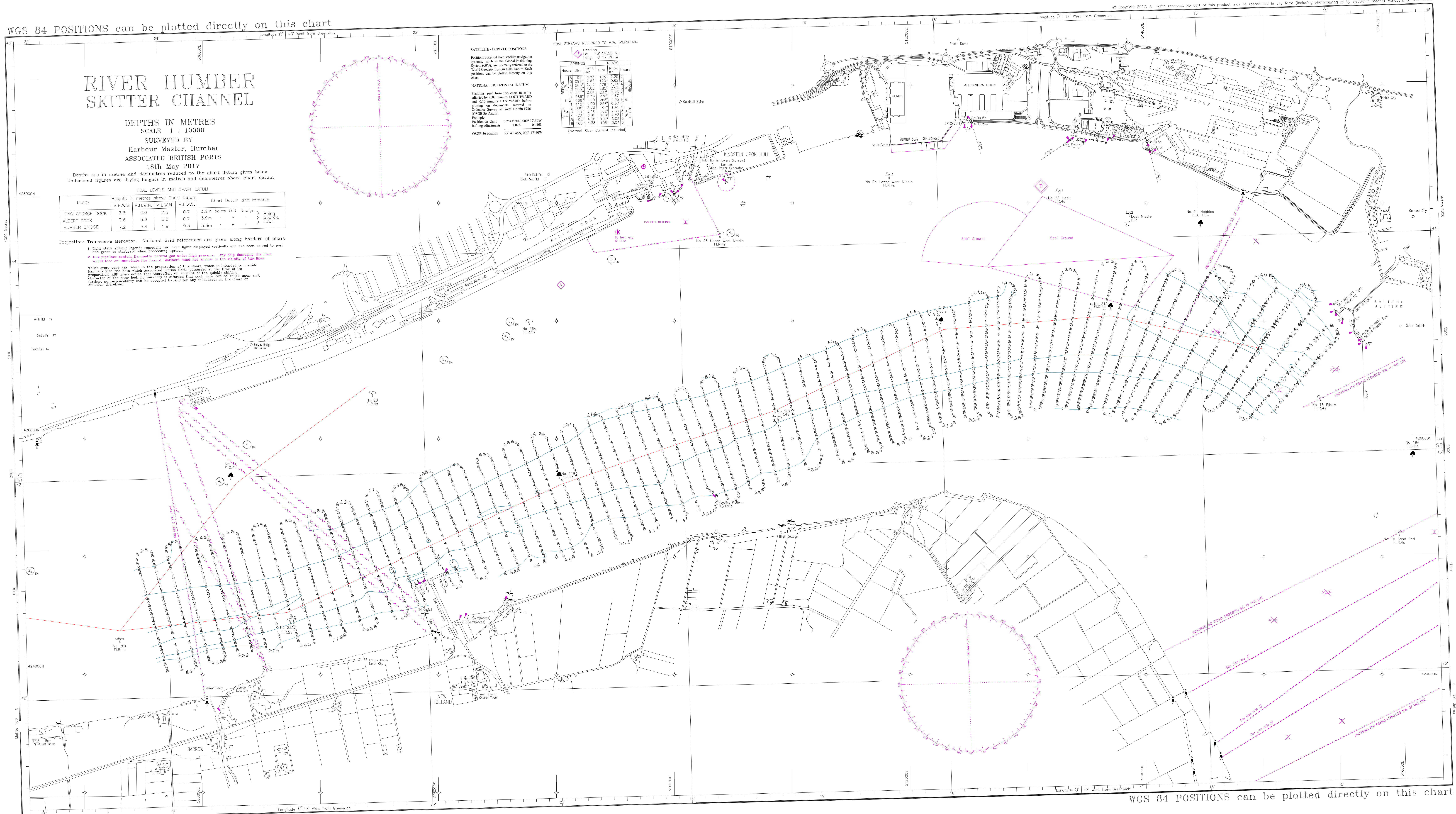
NATIONAL HORIZONTAL DATUM
Positions read from this chart must be adjusted by 602 metres SOUTHWARD and 010 metres EASTWARD before plotting on documents referred to Ordnance Survey of Great Britain 1936 (OSGB 36 Datum).

Example:
Position on chart 51° 47' 50N, 00° 17' 50W
lat/long adjustments 0'02S 0'10E
OSGB 36 position 51° 47' 48N, 00° 17' 40W

TIDAL STREAMS REFERRED TO H.W. MIDDLESBROUGH

SPRINGS	Hours	Dirn	Rate	Dirn	Rate	Hours
NEAP	1108	2.83	130°	2.25	0.62	0
	0927	2.62	120°	2.36	0.64	6
	2824	2.16	270°	2.36	0.64	12
	2824	4.05	280°	2.78	0.71	18
EQUINOXIAL	2924	2.61	280°	2.78	0.71	0
	2924	3.38	270°	1.87	0.51	6
	2655	1.00	220°	0.37	1.04	12
	0924	2.73	110°	1.07	1.41	18
FLOOD	1114	3.16	120°	2.36	0.64	0
	1033	3.92	100°	2.60	0.71	6
	1028	4.36	107°	3.02	0.82	12
	1028	4.38	108°	3.02	0.82	18

(Normal River Current Included)



WGS 84 POSITIONS can be plotted directly on this chart